



# CHANTICLEER AVENUE PARK COMMUNITY MEETING

COUNTY OF SANTA CRUZ  
REDEVELOPMENT AGENCY  
&  
DEPT. of PARKS, OPEN SPACE, & CULTURAL SERVICES

*November 30, 2010*

CHANTICLEER AVENUE PARK  
COMMUNITY MEETING  
*November 30, 2010*



# MEETING GOALS

- Summarize the project to date
- Review the schedule and process
- Present the updated park design
- Collect questions from the community



City of Santa Cruz

# Neighborhood Recreational Facilities

**Legend**

EXISTING PARKS

- COUNTY PARKS
- CITY PARKS

ZONING

- COMMERCIAL
- LIGHT INDUSTRIAL
- RESIDENTIAL
- RIPARIAN WOODLAND
- STREAMS

Green Acres Elementary School: Ballfields Play Equipment

Green Acres Elementary School

Park Site

1/2 Mile Radius

Coffee Lane Neighborhood Park: Playground Basketball Court Picnic Tables

City of Capitola

Jose Avenue Neighborhood Park: Skate park Community Garden Basketball Court Play Structure Open Grass Area Volleyball Restrooms



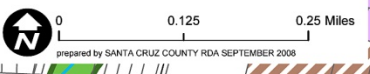
**Chanticleer Park**  
a cooperative project of  
COUNTY OF SANTA CRUZ  
Parks, Open Space  
and Cultural Services  
and the  
Santa Cruz County  
Redevelopment Agency

Hestwood Neighborhood Park: Open Grass Area Play Structure Restrooms

Live Oak Elementary School

Live Oak Elementary School: Softball Field Play Equipment

Brommer Street Neighborhood Park: Basketball Tennis Softball Play Structure Open Grass Area Restrooms



# PROJECT TO DATE

Three Community Workshops



Approved Master Plan Design



Continuation of design work with:

Gil Sanchez, Historic Architect

Daryl Allen, Preservation Specialist, Gil Sanchez Architects

SSA Landscape Architects, Inc.



TONIGHT! – Community Meeting Update



# PROJECT GOALS

**RANGE OF ACTIVITIES** - Provide a variety of recreational activities

**OPPORTUNITIES** - Include facilities for various community members to participate and utilize the park

**ENVIRONMENTAL** - Meet the latest goals and standards using a “Green” approach to park design

**COMPATIBLE** - Fit in with the neighborhood and include a suitable buffer for adjacent properties

**CHARACTER** - Enhance and incorporate park elements that reflect the historic nature of Live Oak





17<sup>th</sup> AVENUE



CHANTICLEER AVENUE

**CHANTICLEER AVENUE PARK**  
COMMUNITY MEETING  
*November 30, 2010*



# EXISTING CONDITIONS



**CHANTICLEER AVENUE PARK**  
COMMUNITY MEETING  
*November 30, 2010*



# EXISTING CONDITIONS



**CHANTICLEER AVENUE PARK**  
COMMUNITY MEETING  
*November 30, 2010*







**CHANTICLEER AVENUE PARK**  
COMMUNITY MEETING  
*November 30, 2010*





**CHANTICLEER AVENUE PARK**  
COMMUNITY MEETING  
*November 30, 2010*



# OVERALL SITE PLAN



**CHANTICLEER AVENUE PARK**  
COMMUNITY MEETING  
*November 30, 2010*



# MILLER HOUSE



CHANTICLEER AVENUE

**CHANTICLEER AVENUE PARK**

COMMUNITY MEETING

*November 30, 2010*



# TANK HOUSE & GARDEN SHED



CHANTICLEER AVENUE

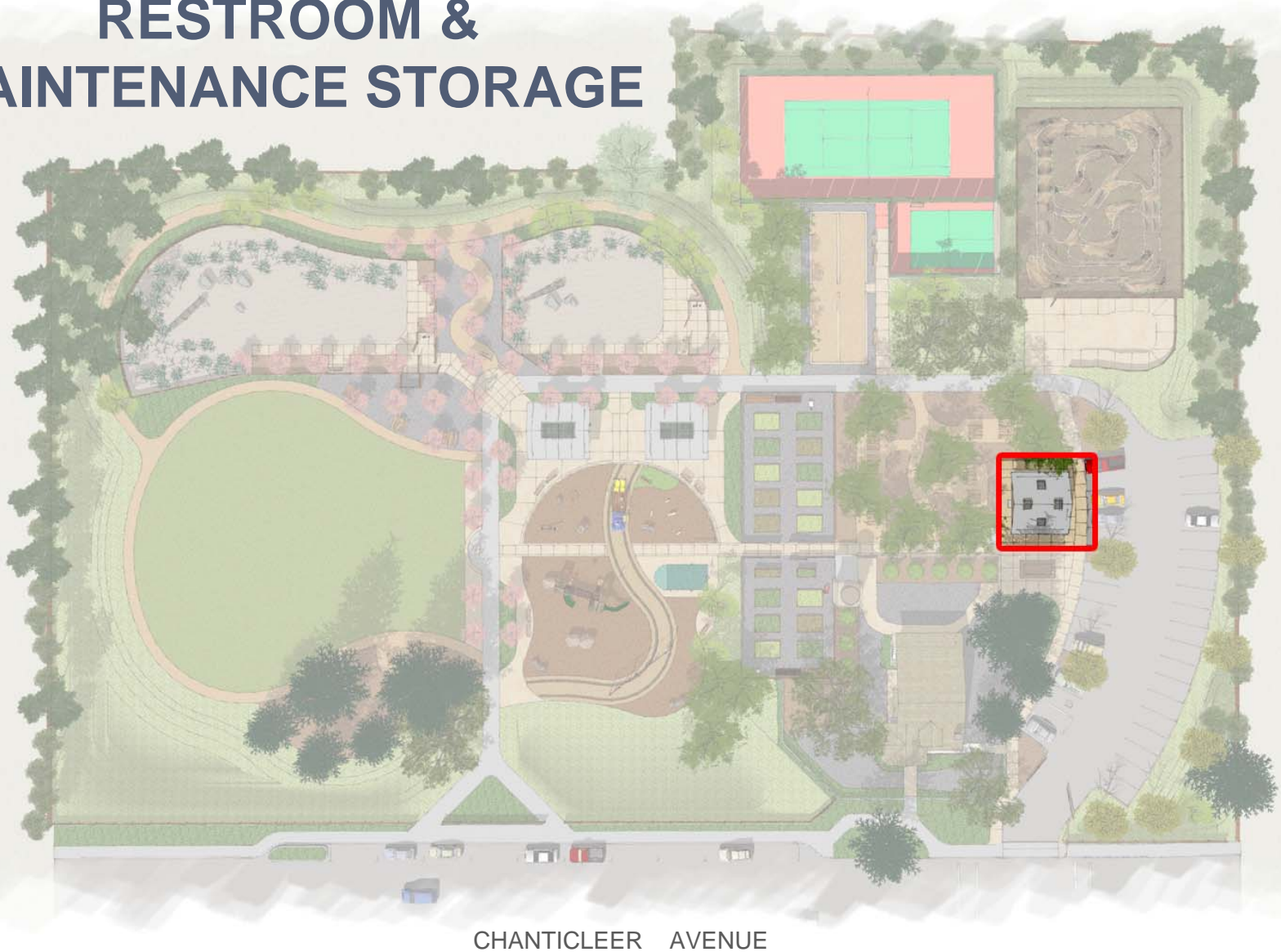
**CHANTICLEER AVENUE PARK**

COMMUNITY MEETING

November 30, 2010



# RESTROOM & MAINTENANCE STORAGE



**CHANTICLEER AVENUE PARK**  
COMMUNITY MEETING  
*November 30, 2010*



# PICNIC SHELTERS

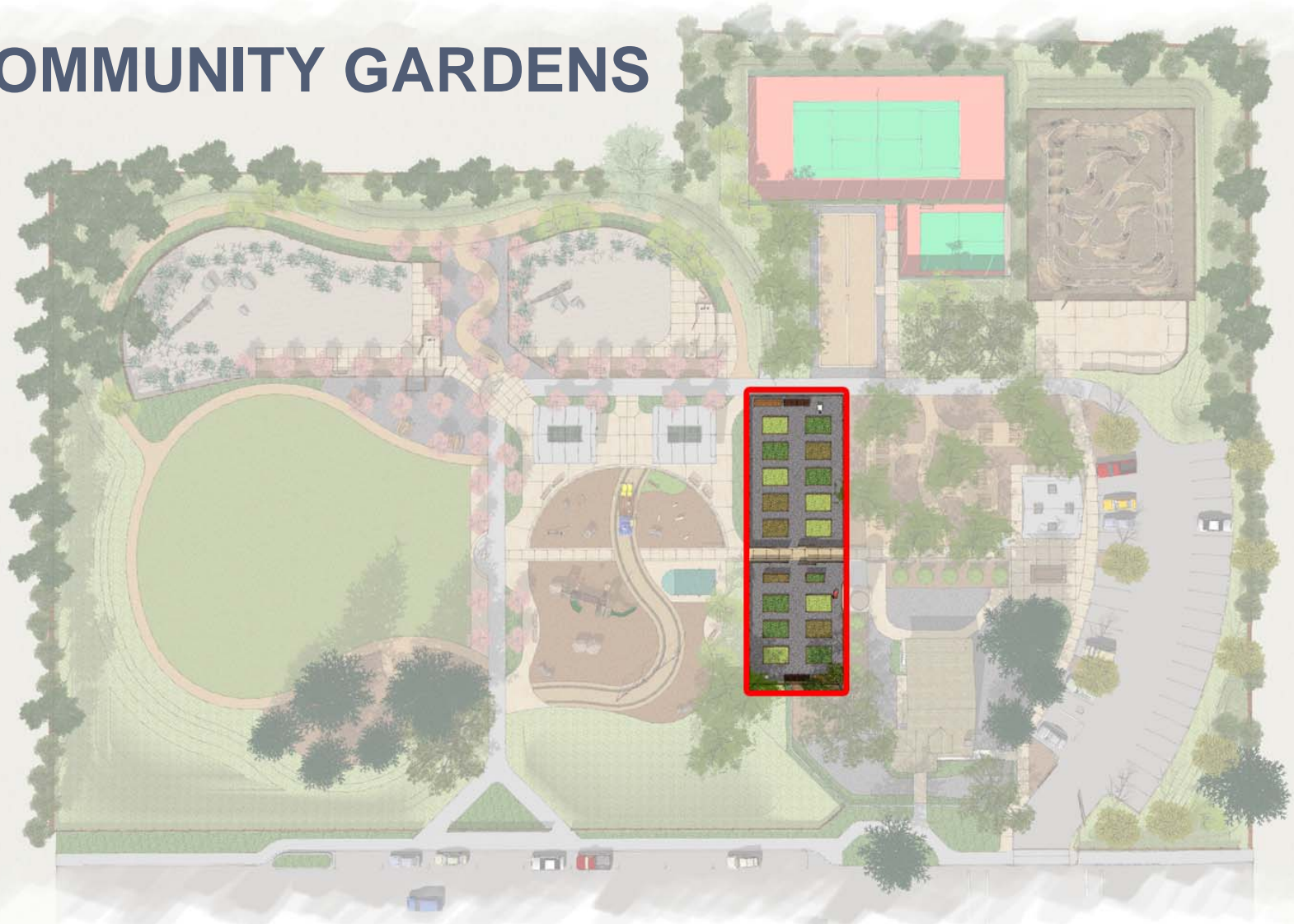


CHANTICLEER AVENUE

**CHANTICLEER AVENUE PARK**  
COMMUNITY MEETING  
*November 30, 2010*



# COMMUNITY GARDENS



CHANTICLEER AVENUE

**CHANTICLEER AVENUE PARK**

COMMUNITY MEETING

*November 30, 2010*





# ACTIVE PLAY AREA



**CHANTICLEER AVENUE PARK**  
COMMUNITY MEETING  
*November 30, 2010*



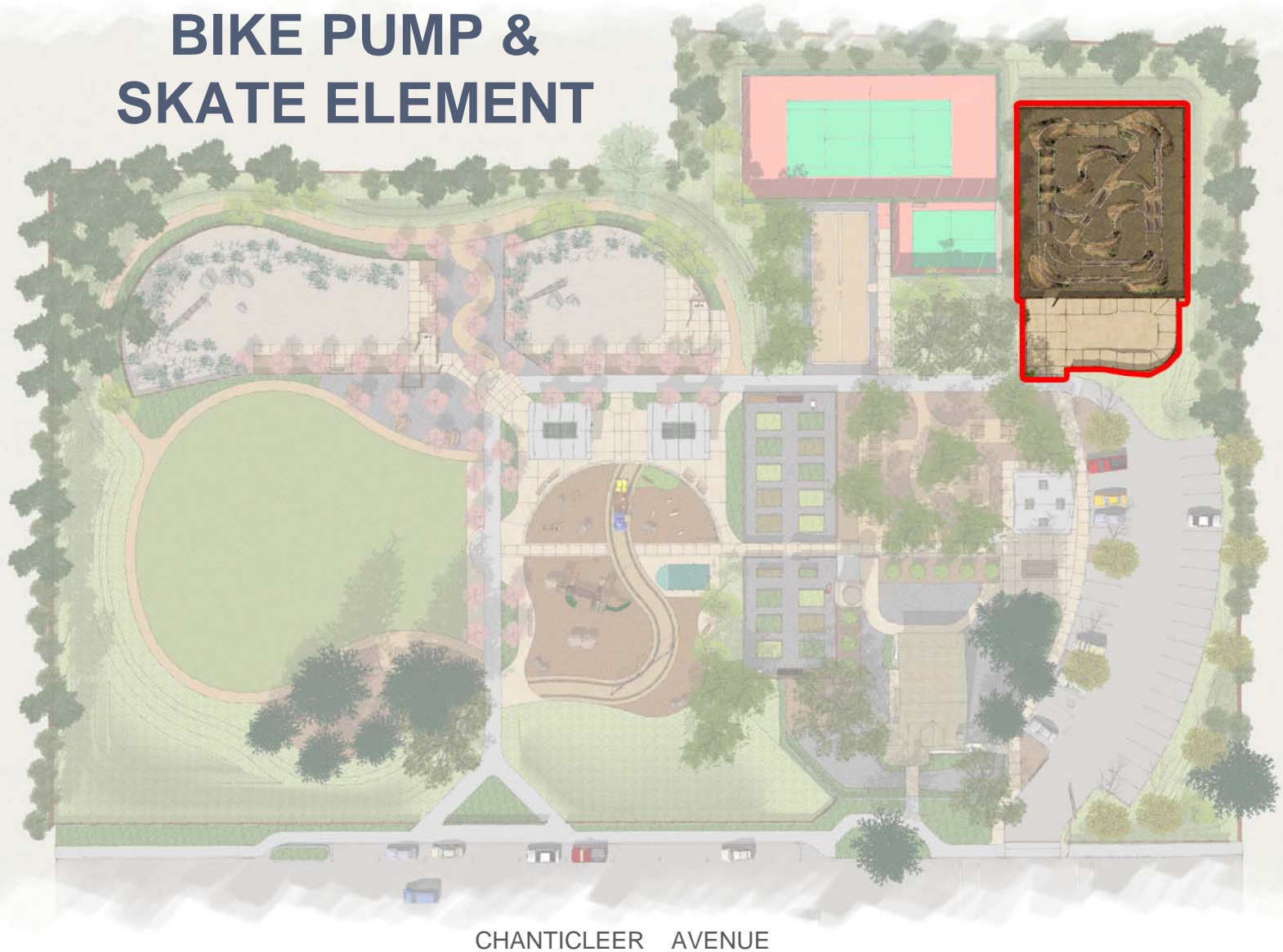
# OFF-LEASH DOG AREAS



**CHANTICLEER AVENUE PARK**  
COMMUNITY MEETING  
*November 30, 2010*



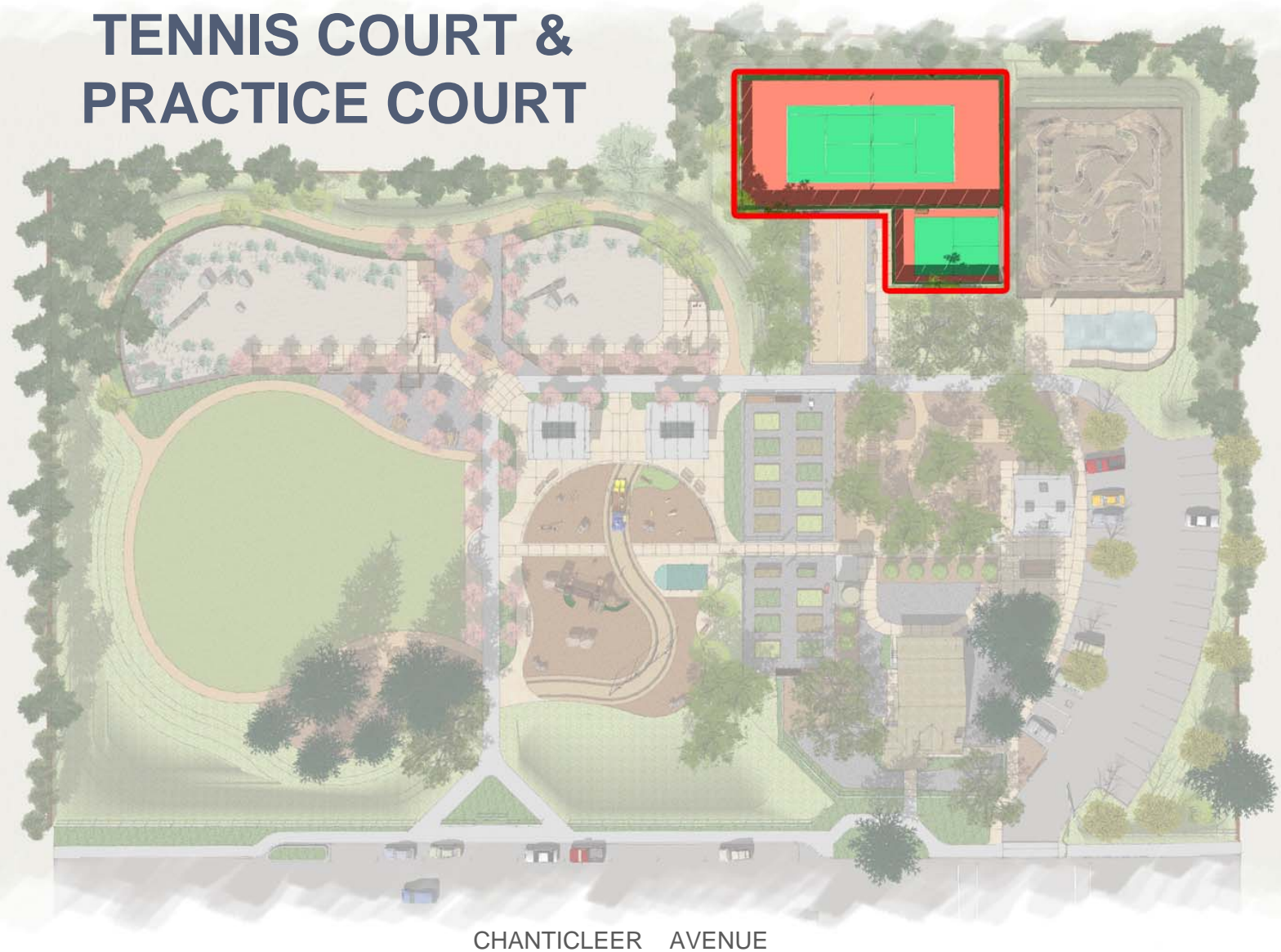
# BIKE PUMP & SKATE ELEMENT



**CHANTICLEER AVENUE PARK**  
COMMUNITY MEETING  
*November 30, 2010*



# TENNIS COURT & PRACTICE COURT



CHANTICLEER AVENUE

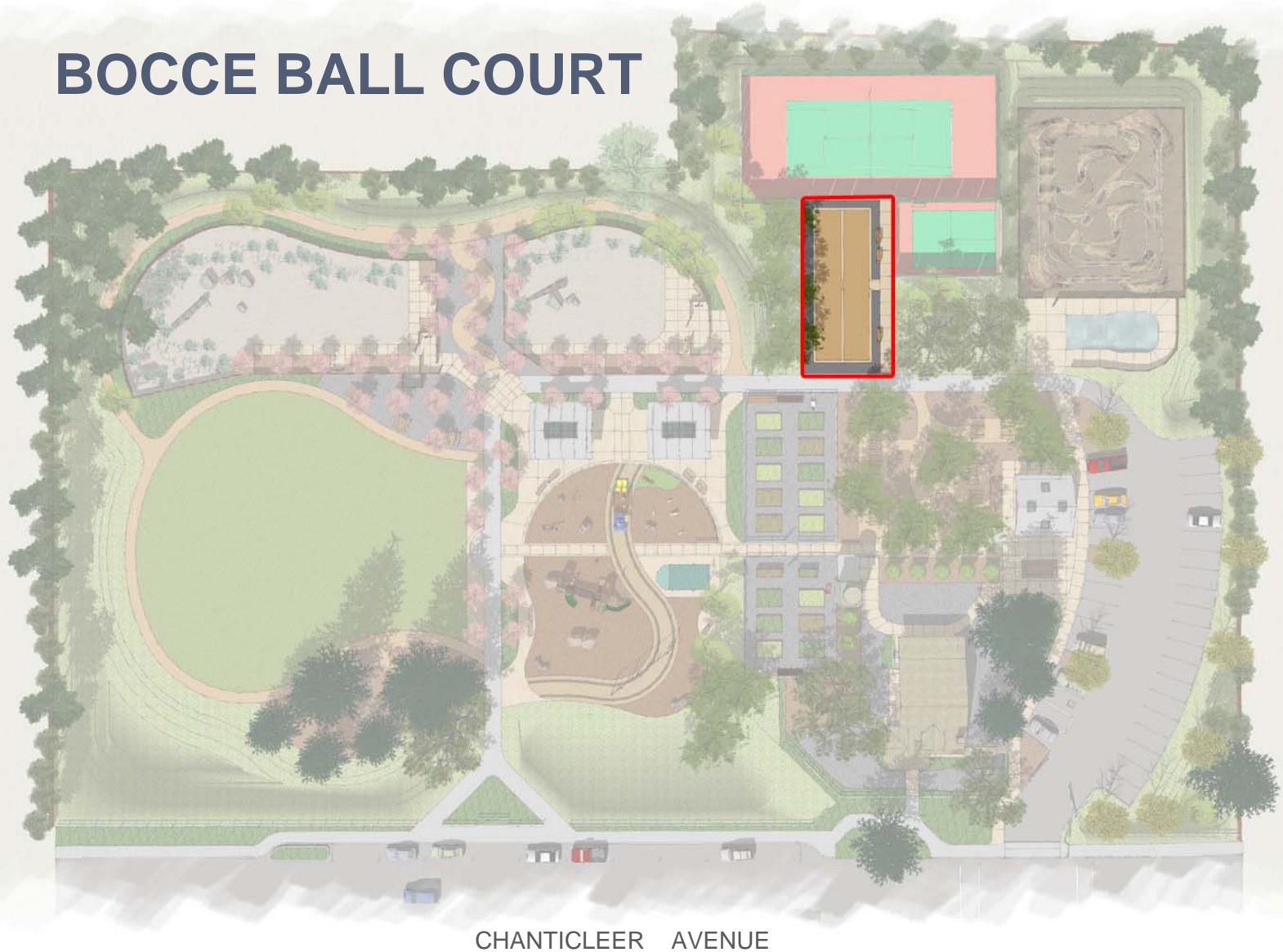
**CHANTICLEER AVENUE PARK**

COMMUNITY MEETING

November 30, 2010



# BOCCE BALL COURT



**CHANTICLEER AVENUE PARK**  
COMMUNITY MEETING  
*November 30, 2010*



# INFORMAL TRAIL



**CHANTICLEER AVENUE PARK**  
COMMUNITY MEETING  
*November 30, 2010*



# OAK GROVE PICNIC AREA



CHANTICLEER AVENUE

**CHANTICLEER AVENUE PARK**  
COMMUNITY MEETING  
*November 30, 2010*



# REDWOOD GROVE PICNIC AREA



CHANTICLEER AVENUE

**CHANTICLEER AVENUE PARK**

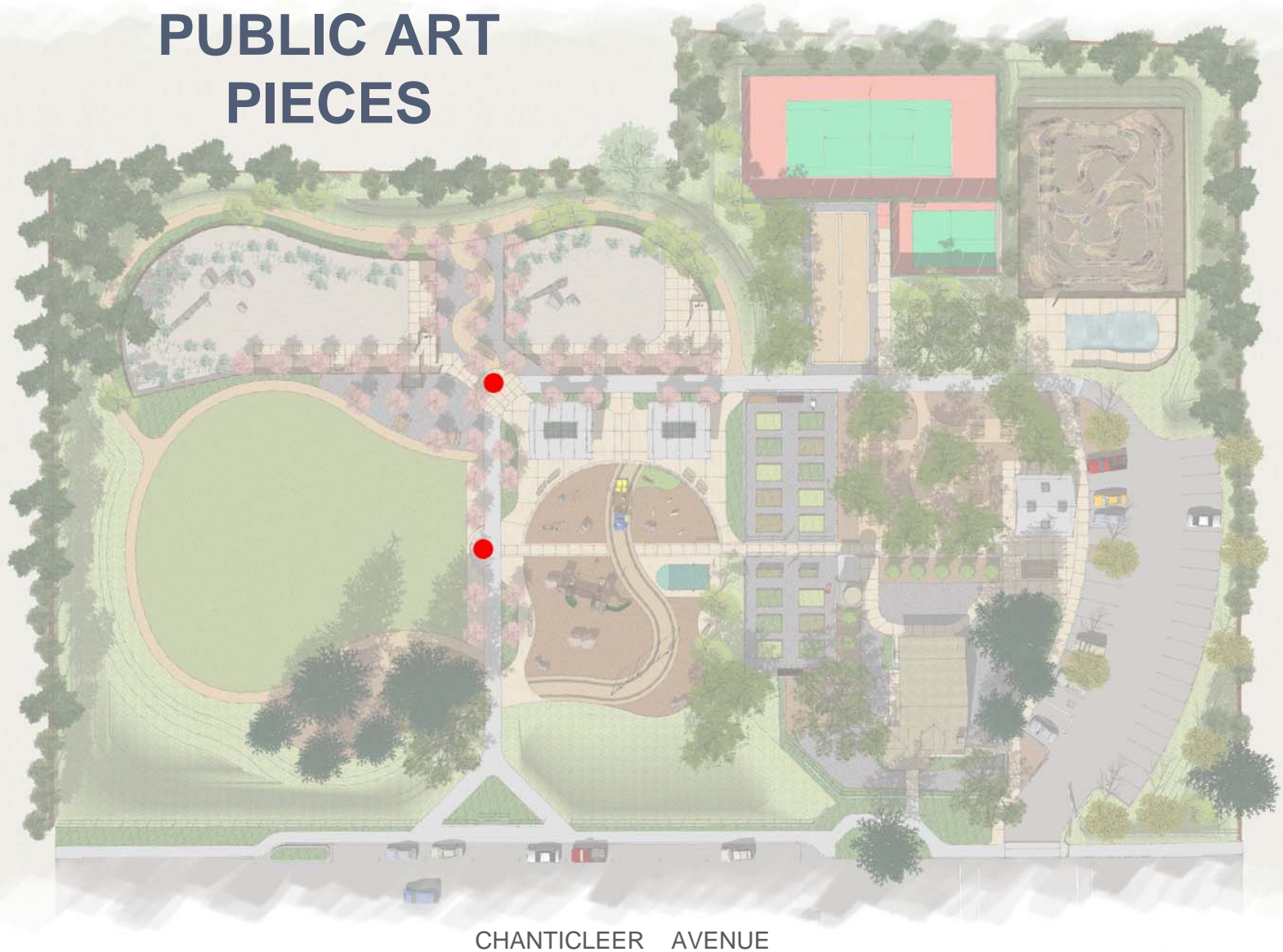
COMMUNITY MEETING

*November 30, 2010*





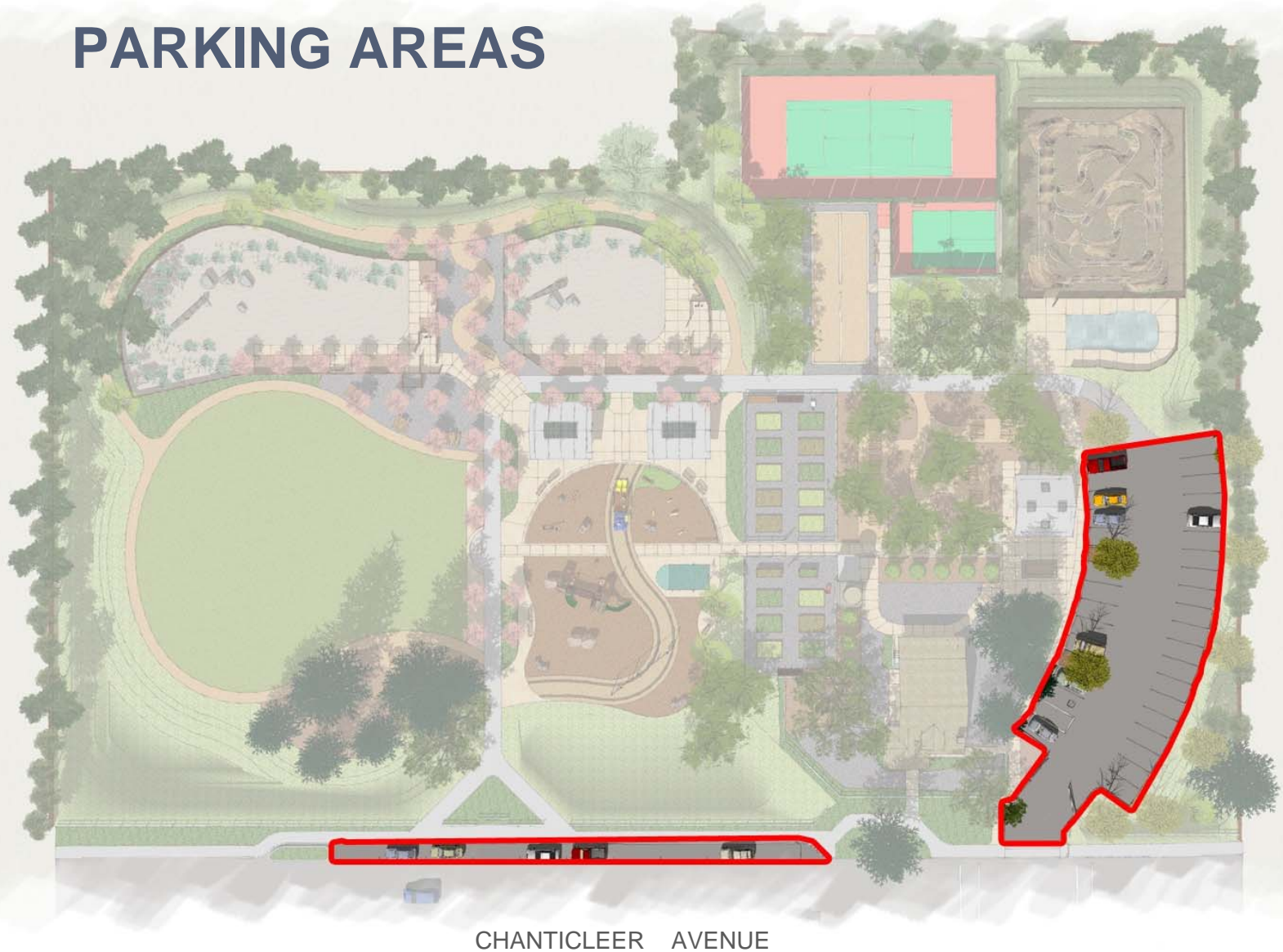
# PUBLIC ART PIECES



**CHANTICLEER AVENUE PARK**  
COMMUNITY MEETING  
*November 30, 2010*



# PARKING AREAS



**CHANTICLEER AVENUE PARK**  
COMMUNITY MEETING  
*November 30, 2010*





**CHANTICLEER AVENUE PARK**  
COMMUNITY MEETING  
*November 30, 2010*





**CHANTICLEER AVENUE PARK**  
COMMUNITY MEETING  
*November 30, 2010*





**CHANTICLEER AVENUE PARK**  
COMMUNITY MEETING  
*November 30, 2010*



# MILLER HOUSE



**CHANTICLEER AVENUE PARK**  
COMMUNITY MEETING  
*November 30, 2010*





# CHANTICLEER AVENUE PARK

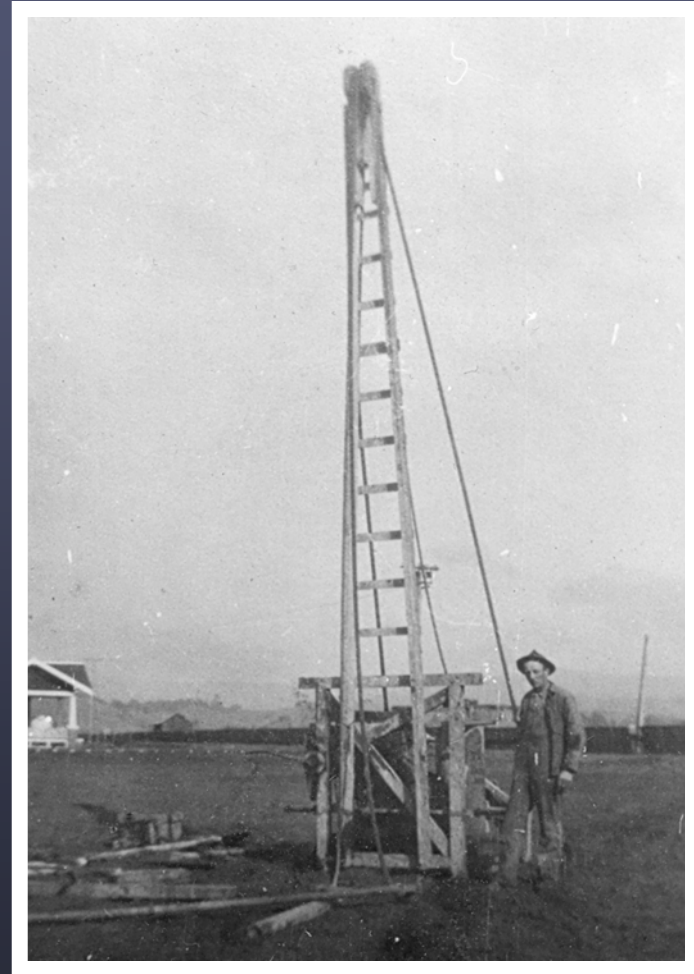
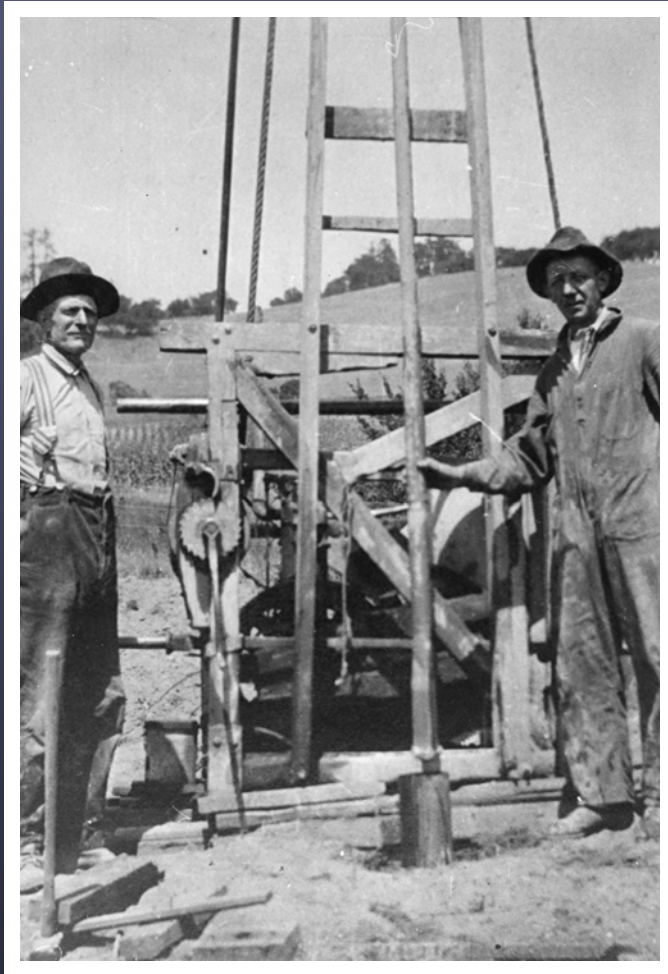
COMMUNITY MEETING

*November 30, 2010*



# PROJECT HISTORY

## PROJECT SETTING



**CHANTICLEER AVENUE PARK**  
COMMUNITY MEETING  
*November 30, 2010*





# MILLER HOUSE



*Gravel Chip Paving*

**CHANTICLEER AVENUE PARK**  
COMMUNITY MEETING  
*November 30, 2010*



# MILLER HOUSE



**CHANTICLEER AVENUE PARK**  
COMMUNITY MEETING  
*November 30, 2010*



# TANK HOUSE & GARDEN SHED



**CHANTICLEER AVENUE PARK**  
COMMUNITY MEETING  
*November 30, 2010*



# TANK HOUSE & GARDEN SHED



**CHANTICLEER AVENUE PARK**  
COMMUNITY MEETING  
*November 30, 2010*



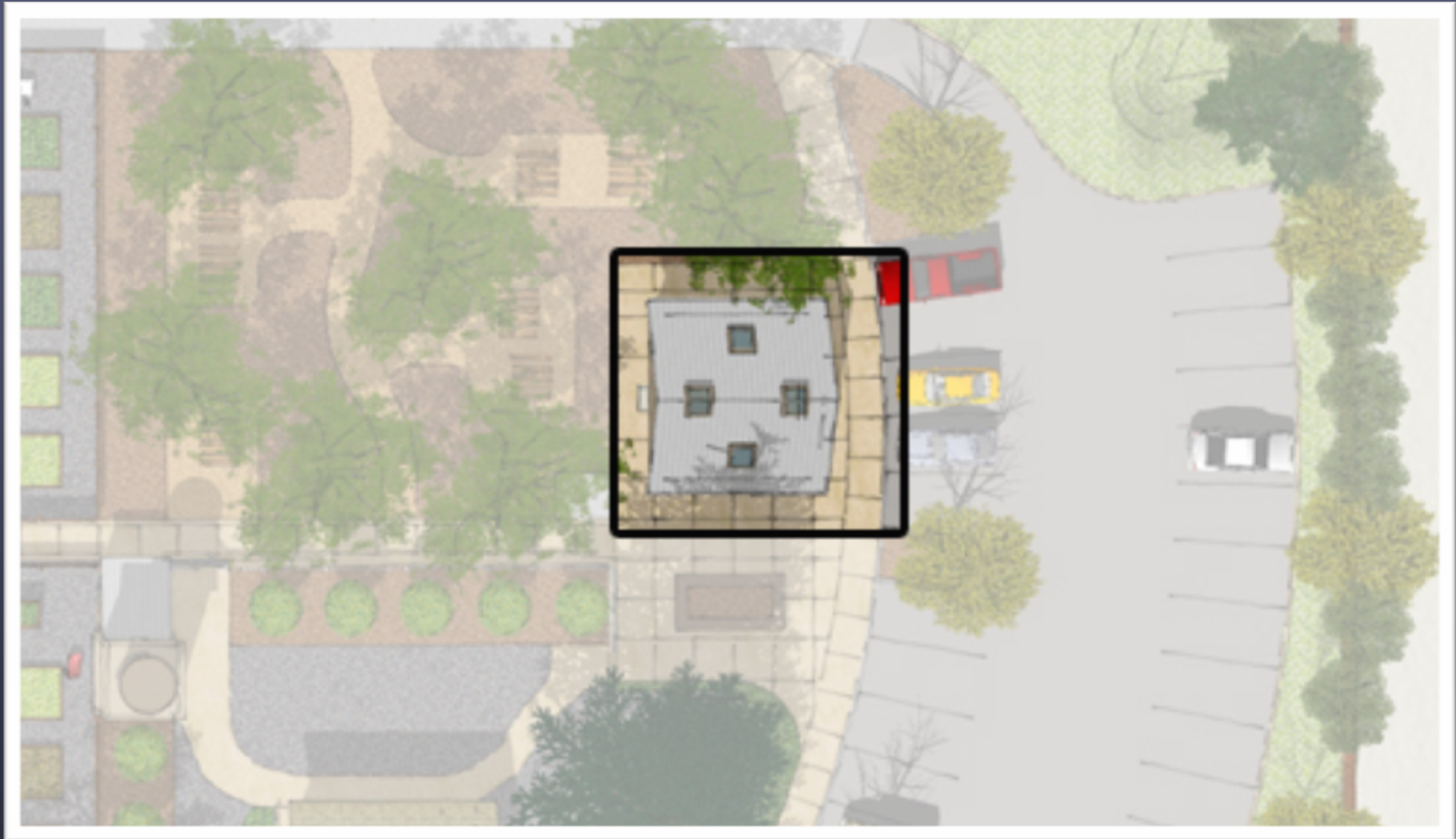
# TANK HOUSE & GARDEN SHED



**CHANTICLEER AVENUE PARK**  
COMMUNITY MEETING  
*November 30, 2010*



# RESTROOM & STORAGE MAINTENANCE



**CHANTICLEER AVENUE PARK**  
COMMUNITY MEETING  
*November 30, 2010*



# RESTROOM & STORAGE MAINTENANCE



# PICNIC SHELTERS



**CHANTICLEER AVENUE PARK**  
COMMUNITY MEETING  
*November 30, 2010*





# PICNIC SHELTERS



**CHANTICLEER AVENUE PARK**  
COMMUNITY MEETING  
*November 30, 2010*



# ACTIVE PLAY AREAS



**CHANTICLEER AVENUE PARK**

COMMUNITY MEETING

*November 30, 2010*



# ACTIVE PLAY AREAS

## 2-5 YEAR OLD PLAYGROUND



**CHANTICLEER AVENUE PARK**  
COMMUNITY MEETING  
*November 30, 2010*



# ACTIVE PLAY AREAS

## 2-5 YEAR OLD PLAYGROUND



**CHANTICLEER AVENUE PARK**  
COMMUNITY MEETING  
*November 30, 2010*



# ACTIVE PLAY AREAS

## 2-5 YEAR OLD PLAYGROUND



**CHANTICLEER AVENUE PARK**  
COMMUNITY MEETING  
*November 30, 2010*



# ACTIVE PLAY AREAS

## 5-12 YEAR OLD PLAYGROUND



**CHANTICLEER AVENUE PARK**  
COMMUNITY MEETING  
*November 30, 2010*



# ACTIVE PLAY AREAS

## 5-12 YEAR OLD PLAYGROUND



**CHANTICLEER AVENUE PARK**  
COMMUNITY MEETING  
*November 30, 2010*



# ACTIVE PLAY AREAS

## 5-12 YEAR OLD PLAYGROUND



**CHANTICLEER AVENUE PARK**  
COMMUNITY MEETING  
*November 30, 2010*





# OFF-LEASH DOG AREAS



**CHANTICLEER AVENUE PARK**

COMMUNITY MEETING

*November 30, 2010*



# OFF-LEASH DOG AREAS

## SMALL DOG AREA



**CHANTICLEER AVENUE PARK**  
COMMUNITY MEETING  
*November 30, 2010*

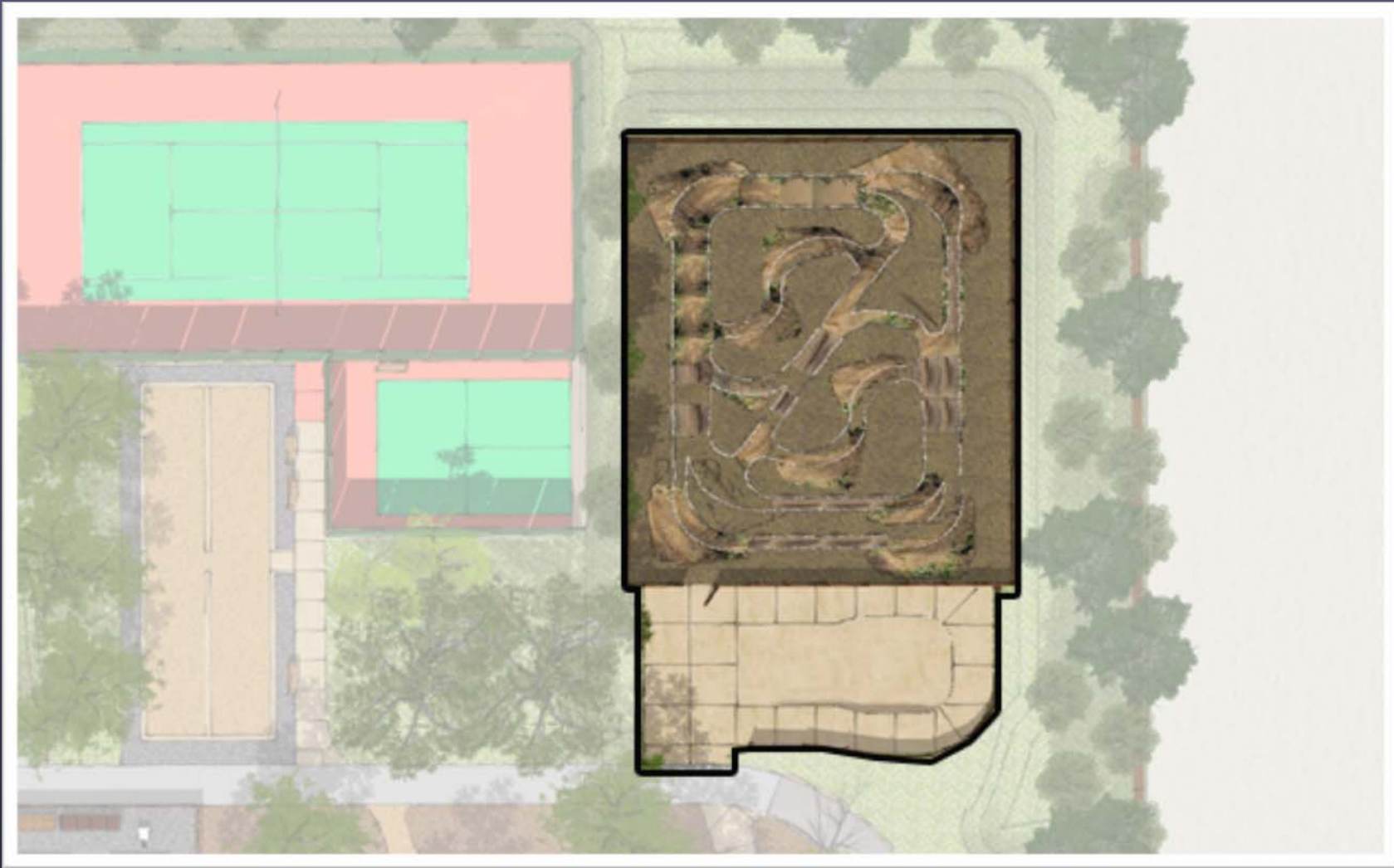


# OFF-LEASH DOG AREAS

## LARGE DOG AREA



# BIKE PUMP TRACK & BEGINNER SKATE FEATURE



**CHANTICLEER AVENUE PARK**

COMMUNITY MEETING

*November 30, 2010*



# BEGINNER SKATE FEATURE

## PLAN VIEW



**CHANTICLEER AVENUE PARK**

COMMUNITY MEETING

*November 30, 2010*



# BEGINNER SKATE FEATURE

## PERSPECTIVE VIEW



**CHANTICLEER AVENUE PARK**

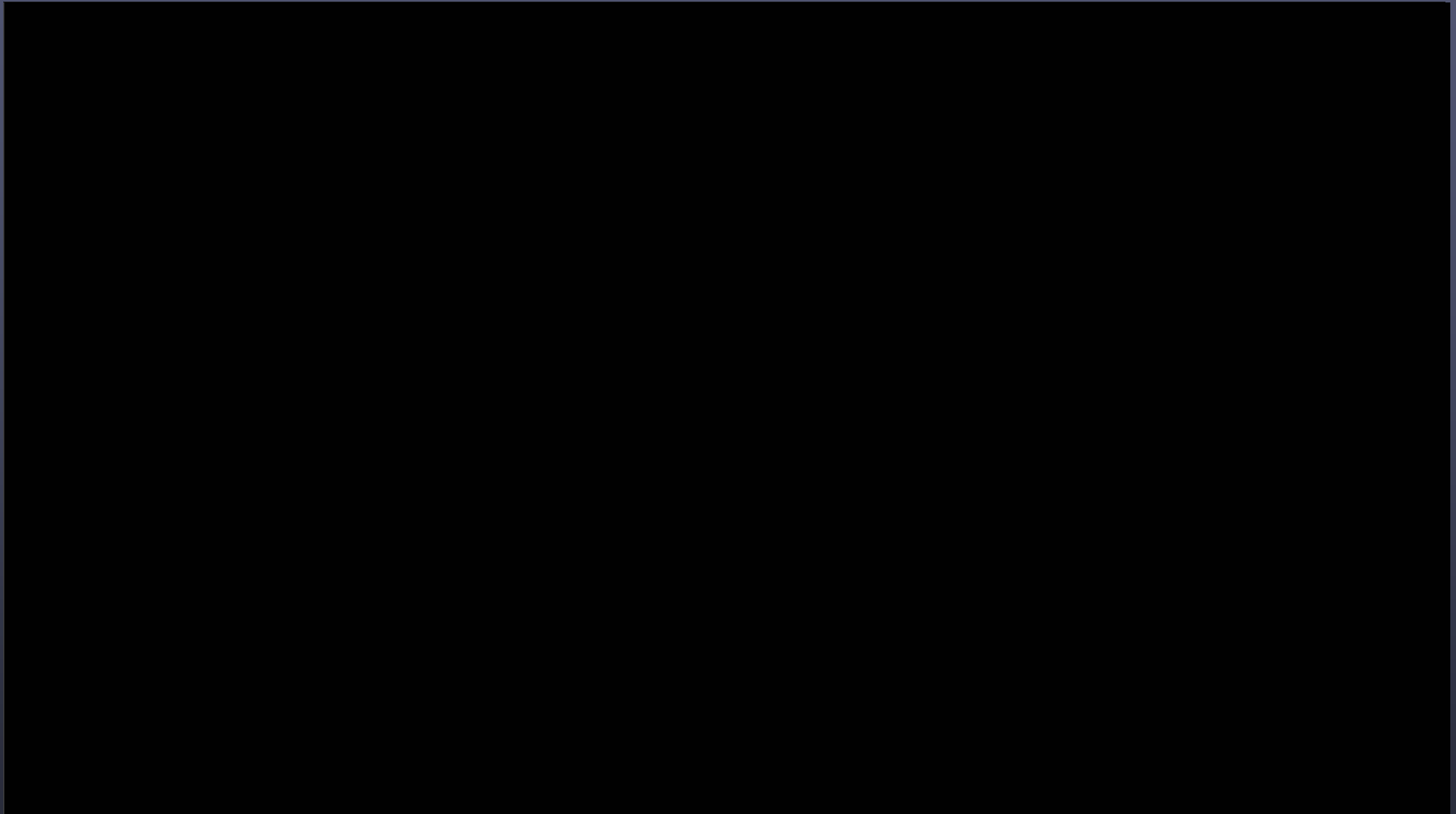
COMMUNITY MEETING

*November 30, 2010*



# BEGINNER SKATE FEATURE

## VIRTUAL TOUR



**CHANTICLEER AVENUE PARK**  
COMMUNITY MEETING  
*November 30, 2010*



# BIKE PUMP TRACK

## PLAN VIEW



**CHANTICLEER AVENUE PARK**

COMMUNITY MEETING

*November 30, 2010*





# BIKE PUMP TRACK

## PERSPECTIVE VIEW

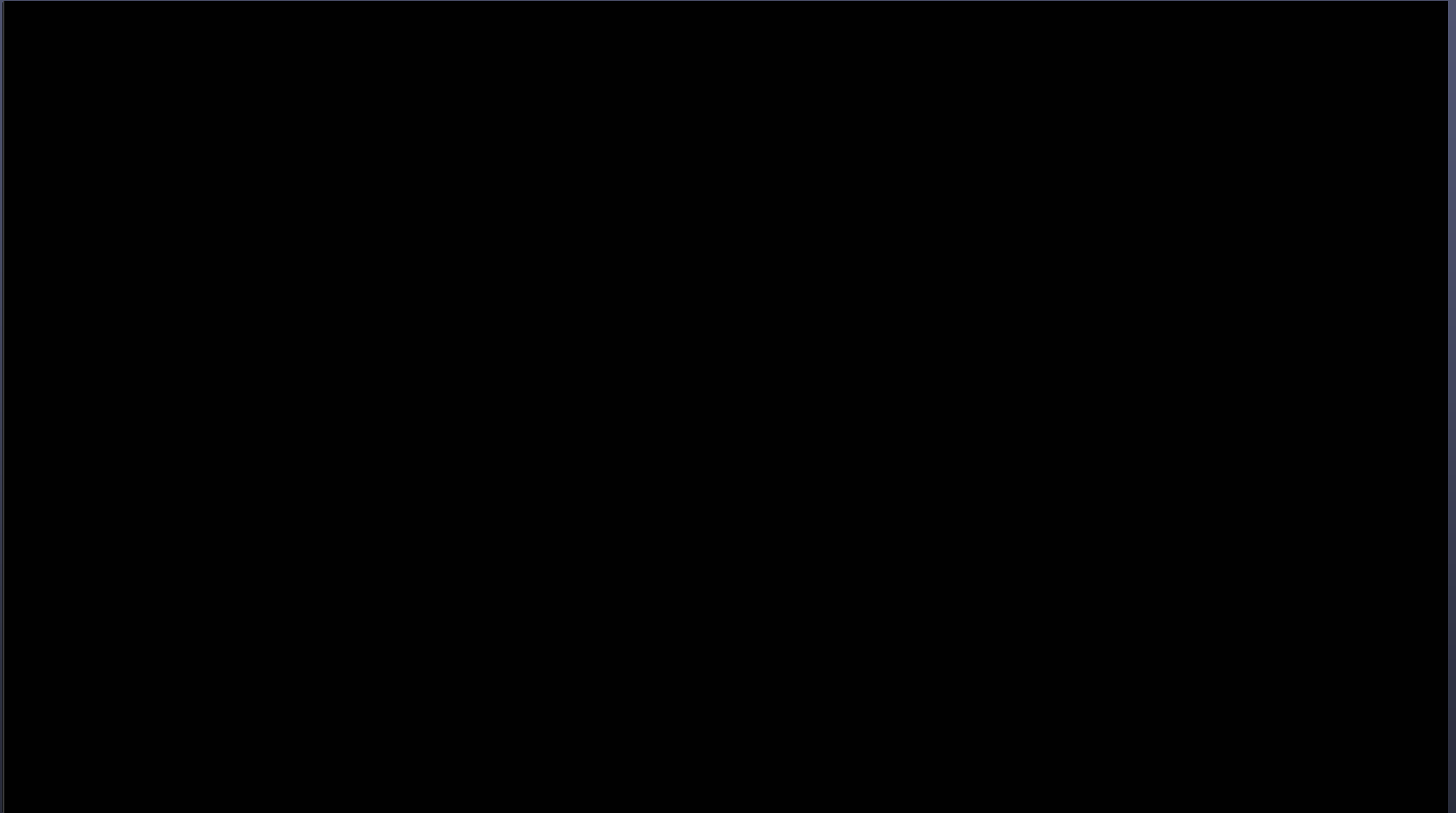


**CHANTICLEER AVENUE PARK**  
COMMUNITY MEETING  
*November 30, 2010*



# BIKE PUMP TRACK

## VIRTUAL TOUR



**CHANTICLEER AVENUE PARK**  
COMMUNITY MEETING  
*November 30, 2010*



# SITE LANDSCAPING

## TREES



*Stone Fruit Remnant Orchard*



*Citrus Tree Remnant Orchard*



*CA Native Trees*



# SITE LANDSCAPING

## NATIVE GRASS & WILDFLOWERS



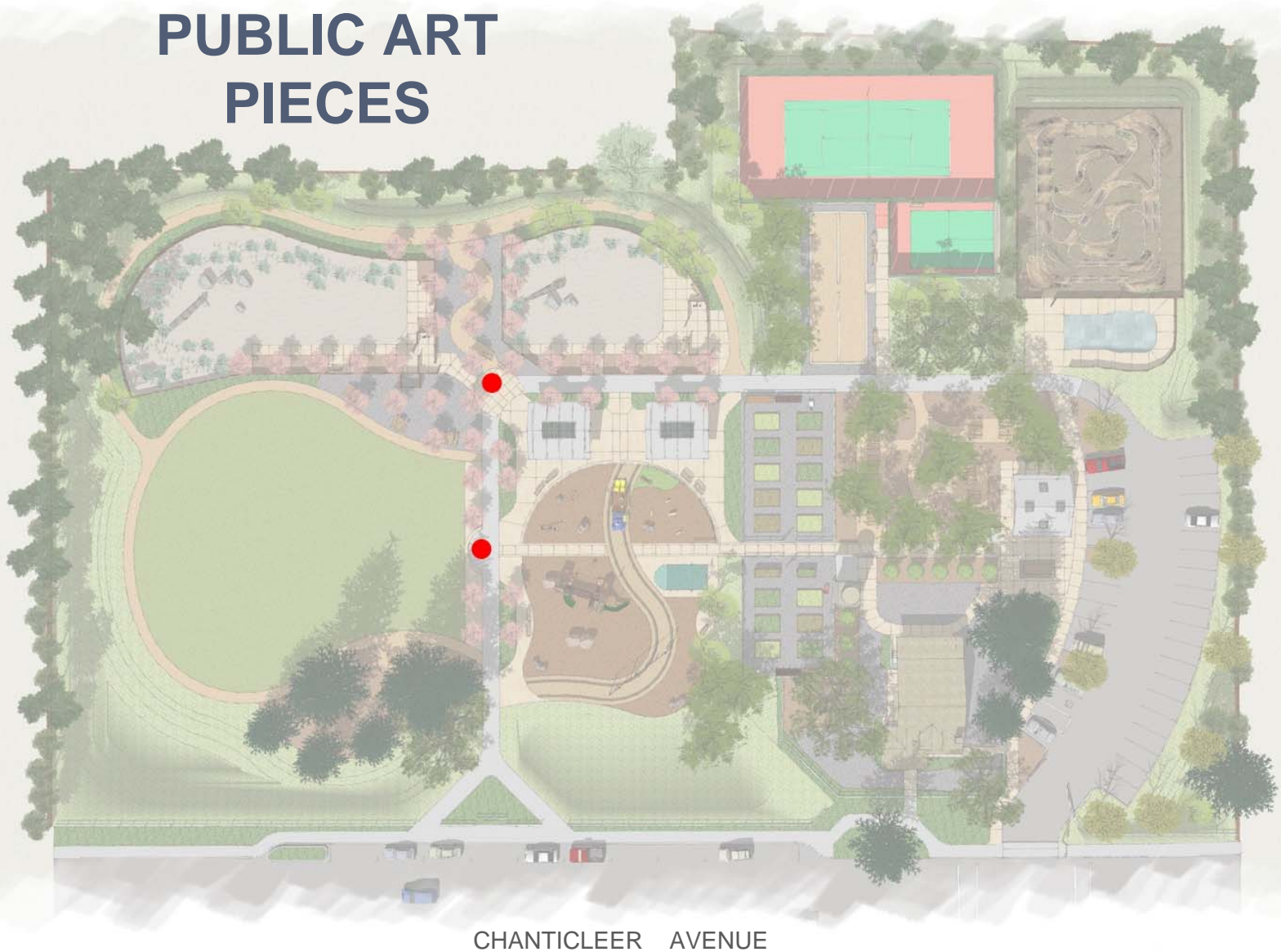
**CHANTICLEER AVENUE PARK**

COMMUNITY MEETING

*November 30, 2010*



# PUBLIC ART PIECES



CHANTICLEER AVENUE

**CHANTICLEER AVENUE PARK**

COMMUNITY MEETING

*November 30, 2010*





*"Storyteller"*  
Norview Community Center – Norfolk, VA  
Dolomitic Limestone  
6' x 5' x 4' and 4' x 4' x 4' and 3' benches



*“Let the music play”*

Little Toots Park – Steamboat Springs, CO

Dolomitic Limestone

6' x 4' x 4', 5' x 5' x 3', 5' x 5' x 4', drums- 2' x 3' x 3', 18" x 3' x 3', 30" x 3' x 3'

**CHANTICLEER AVENUE PARK**

COMMUNITY MEETING

November 30, 2010





*“Let the music play”*

Little Toots Park – Steamboat Springs, CO

Dolomitic Limestone

6' x 4' x 4', 5' x 5' x 3', 5' x 5' x 4', drums- 2' x 3' x 3', 18" x 3' x 3', 30" x 3' x 3'

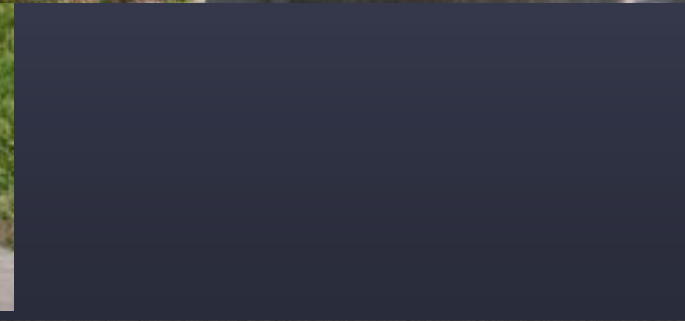
**CHANTICLEER AVENUE PARK**

COMMUNITY MEETING

November 30, 2010







*"Let the music play"*

Little Toots Park – Steamboat Springs, CO

Dolomitic Limestone

6' x 4' x 4', 5' x 5' x 3', 5' x 5' x 4', drums- 2' x 3' x 3', 18" x 3' x 3', 30" x 3' x 3'

**CHANTICLEER AVENUE PARK**

COMMUNITY MEETING

November 30, 2010



*“Once upon a time there was a tully monster...”*  
Kohl Children’s Museum of Greater Chicago – Glenview, IL  
Indiana Limestone  
4’ x 4’ x 4’ and 3’ x 2’ x 4’ and 2’ x 2’ x 4’



*“Once upon a time there was a tully monster...”*

Kohl Children’s Museum of Greater Chicago – Glenview, IL  
Indiana Limestone

4’ x 4’ x 4’ and 3’ x 2’ x 4’ and 2’ x 2’ x 4’



**CHANTICLEER AVENUE PARK**

COMMUNITY MEETING

November 30, 2010



*"A Day at the Park"*  
Chanticleer Avenue Park – Santa Cruz, CA



**CHANTICLEER AVENUE PARK**  
COMMUNITY MEETING  
*November 30, 2010*



*"A Day at the Park"*  
Chanticleer Avenue Park  
Santa Cruz, CA



*"A Day at the Park"*  
Chanticleer Avenue Park – Santa Cruz, CA



**CHANTICLEER AVENUE PARK**  
COMMUNITY MEETING  
*November 30, 2010*



*"A Day at the Park"*  
Chanticleer Avenue Park – Santa Cruz, CA



**CHANTICLEER AVENUE PARK**  
COMMUNITY MEETING  
*November 30, 2010*



*"A Day at the Park"*

Chanticleer Avenue Park – Santa Cruz, CA



**CHANTICLEER AVENUE PARK**

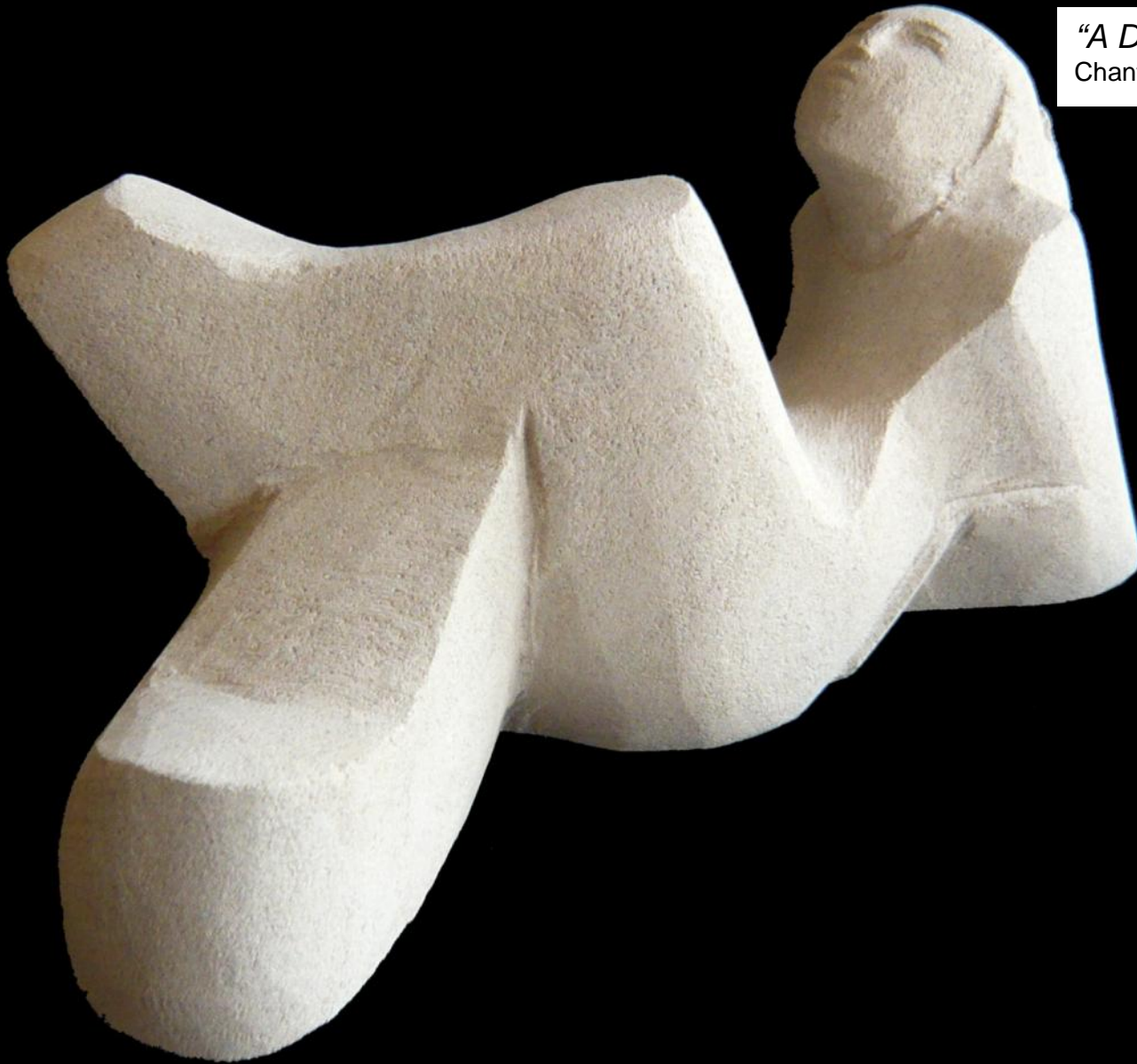
COMMUNITY MEETING

*November 30, 2010*



*"A Day at the Park"*

Chanticleer Avenue Park – Santa Cruz, CA



**CHANTICLEER AVENUE PARK**

COMMUNITY MEETING

*November 30, 2010*





# SCHEDULE & PROCESS

## 2010 – 2011

- Schematic Design
- Planning Permit Process
- Construction Documentation

## 2012

- Park Construction



THANK YOU!



**CHANTICLEER AVENUE PARK**  
COMMUNITY MEETING  
*November 30, 2010*

